



Riverbend Ladies Golf Association

“A Force on the Course”

FORE!

Volume 12, Issue 2

February, 2003

Inside this issue:

- Captains Letter
- Player Recognition
- Rules by Sharma
- Online Internet Posting
- From the Golf Shop
- February Tournament
- 2003 Tournament Schedule
- Pacific Northwest Golf Show
- 2003 RLGA Board



From your Captain

El Nino was kind to us during most of January, giving us some good days for golf, so I hope you've been able to get out and play. With any luck, we'll have some more opportunities to shake the rust off our golf swings before our first tournament on Sunday February 23. The entry form is included with this issue. The format is really fun, so please plan to participate and support our club!

Also included with this issue is information about our new Player Recognition program (previously known as the Birdie Tree). A big thanks to Esther Gladson for coming up with some great new ideas and for chairing the program this year.

Last but not least, rumor has it that the *restaurant-formerly-known-as* the Firecreek Grill has a buyer and the deal is reportedly going to close any day now. The new restaurant is supposed to be up and running by our first tournament, which is good news; I was beginning to wonder if we'd have to set up our sign-in table in the cart barn...keep your fingers crossed!

See you on the 23rd

Elana Bryan
Captain



Player Recognition

New in 2003—Look for Pink RLGA Player Recognition Forms in the clubhouse to record your RLGA achievements:

Personal Best—Each time you shoot a personal best low score at Riverbend while playing with another RLGA member, record and

submit a Player Recognition Form. Then look for your name in the next issue of the FORE.

Most Rounds Played & Lowest Average Net

Score—Each time that you play during a regularly scheduled Wednesday, Saturday or Sunday RLGA

time at Riverbend between February 15 and October 15, submit your foursome's scores on a Player Recognition Form.

Continued on page 2

Player Recognition Corner, continued

Awards will be given at the end of the season for the most rounds played and the lowest average net score.

We will continue to recognize the first time players break 100, 90, 80 and 70 as well as birdies, chip-ins and eagles. Remember to submit forms for each of these events, as there is a race for the most birdies. Also note whether you do or do not want to receive a pin in recognition of your achievement.

Player Recognition Guidelines can be found on the back of the Player Recognition Form. Players must be current 2003 RLGA members to participate. So get your membership paid and start participating!

Esther Gladson
Player Recognition Chair



Rules by Sharma



There is something about water on a golf course that causes many of us to panic. I have had a good round going only to come to #17 and #18 at Riverbend and all I see is water and I finish all wet. Some of us not only fear hitting into it but when the inevitable happens we push our panic buttons as we try to figure out where to drop the ball.

The first thing to keep in mind is that yellow stakes and lines indicate a water hazard, while red stakes and lines indicate a lateral water hazard. A lateral water hazard generally runs along the side of a hole so that it is impractical to drop a ball behind it.

Another basic issue is whether a ball is lost inside a water hazard or outside of it. In order to proceed under the water-hazard rule, there must be reasonable evidence that the ball ended up in the hazard. This evidence would include how well you or others saw the flight of the ball and the nature of the surrounding area (if the ball might have ended up in deep rough near the hazard, you can't take a water-hazard relief).

You can, of course, play your ball from inside a hazard if you find it there. If you need or choose to take relief, there are two options for a water hazard (yellow stakes), both with a one-stroke penalty.

One—Go back to the spot of your previous shot and drop (or tee) a ball.

Two—Drop a ball behind the water hazard, keeping the point at which the original ball last crossed the margin of the water hazard directly between the hole and the spot on which the ball is dropped, with no limit to how far behind the water hazard the ball may be dropped.

This second option is where many of us become confused. In dropping behind the hazard, we walk back to-

ward the tee on the line of flight of our shot. This isn't the correct line unless the ball was flying absolutely straight at the hole. The point from which the last shot was played has nothing to do with the relief line; the two points to use in drawing the line are the last point of entry and the hole.

While these are the only options in Rule 26-1, keep in mind that the course might have established drop zones under a Local Rule, which would provide another choice.

If the ball ended up in a lateral water hazard (red stakes), there is one additional option that includes two choices.

Drop a ball outside the water hazard within two club lengths of and not nearer the hole than (i) the point where the original ball last crossed the margin of the water hazard, or (ii) a point on the opposite margin of the water hazard equidistant from the hole.

Point (i) is easy enough; as for point (ii) you'll rarely need to use it, so we'll save that for an advanced class

On-line Internet Posting

The request has been sent in and hopefully by the time you are reading this, On-line Internet Posting will be available to our club members. To post scores go to www.ghin.com.

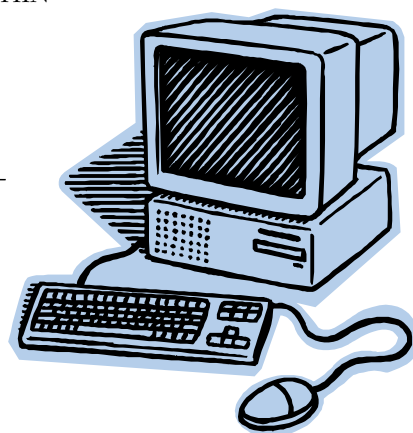
This option is available to make posting scores easier when posting at the golf course is not available. It is not meant to replace posting at the golf course.

When figuring handicaps, the GHIN system utilizes the most current 20 score history. Golfers are not allowed to enter more than 50% of their scores over the Internet. Scores posted via the Internet will have score types of I, AI, TI. If two 9-hole "I" scores are combined, the score type of the resulting 18-hole score will be CI. No more than

10 scores are to be entered over the Internet. If a golfer posts more than 50% of her scores via the internet, her score will be adjusted per the GHIN regulations.

The process of entering scores online is similar to entering scores as a guest at away courses. For additional information, check out the GHIN website www.ghin.com.

**Heather Cooper
Handicap Chair**



From the Golf Shop

Ladies,

Happy February! Well, January was a hit and miss month with the weather. But, we did have some beautiful days and I did see a few ladies out on the links. This month should bring more of the same, but if you've got to feed your addiction — then come on out!

Just a couple of reminders for those of you planning on playing this month or within the next couple of months: Hit a few balls before you venture out on the track. Maybe, just maybe, seek out some professional help with your golf swing. And, be sure to spend a little quality time on your short game before you tee it up. I promise you will have a much more enjoyable experience if you set this process in motion.

While on the instruction front, if you or any other

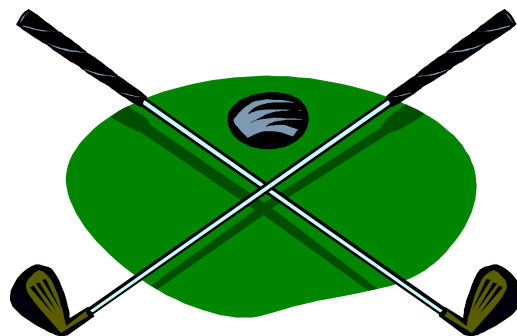
ladies are interested we offer group lessons starting in February. We teach them on Tuesday, Wednesday and Thursday evenings from 6-7 PM or on Saturdays from 10-11 AM. Those of you interested in private instruction, look us up. At last count, our instructors teach ladies from about 20 different clubs in the area, so we must do something right.

On the complex front, the City of Kent has struck a deal with Access Golf to operate the FireCreek Grill. Access Golf, headed up by proprietor Brian Patton, owns the Willows Run and Druids Glen Golf Complexes, an Irish Pub in Fremont and a Mercer Island restaurant. Access Golf interests at Riverbend will be restricted to operating the FireCreek Grill, which by the way, should be in full swing by mid-February.

Before I forget, I want you all to know that 2003 prices are the same as last years. And, remember to take advantage of our 10-round punch cards that will be available in the Spring. Have a great Month, and we'll see you at the 'bend!

**Brett Wilkinson, PGA
Riverbend Golf Complex**

*"10-Round
punch cards
available in
the Spring"*



3 Clubs and a Putter

This month's Tournament

Dust off your three favorite clubs plus your putter for this individual stroke play tournament. There will be awards for gross and net scores. (2002 year-end handicaps will be used). Tournament entry form is attached.

COME AND JOIN THE FUN!

2003 RLGA Tournament Schedule

Be sure to mark your calendar with all our upcoming tournament dates.

<u>Date</u>	<u>Format</u>
February 23	3 Clubs & a Putter
March 22	To Be Announced
April 27	Scramble/Invitational
May 17	Best Ball/Social
June 22	Red White & Blue
July 26	Mixed Chapman
August 23 & 24	Club Championship
September 14	Rally for a Cure
October 18	Scramble/Chapman



Pacific Northwest Golf Show

**Stadium
Exhibition
Center**

**February 28—
March 2, 2003**

The fifth annual Pacific Northwest Golf Show will be held at the Stadium Exhibition Center in Seattle, February 28 through March 2, 2003. The Golf Show is becoming larger and larger each year. If you are interested in obtaining information for an upcoming golf vacation or tryin out what's new in golf equipment, then plan on attending this years show. More information about the show can be found at www.pacificnwgolfshow.com.

2003 RLGA Board of Directors

A big thanks to these intrepid RLGA members who have agreed to serve on the board for 2003. We wouldn't be *A Force on the Course* without them!

Captain	Elana Bryan
Co-Captain	Mary Powers
Secretary	Nancy Henry
Treasurer	Judy Rowe
Trustee	Betty Arendall
Handicap	Heather Cooper
Membership	Linda Selegue
Competitions	Marian Read
Rules	Sharma Shamblin
Tournament Chair	Julie Mohn
Tournament Co-chair	Jan Watson
Team Captain	Shirley Radley
Team Co-captain	Diane Gifford
Player Recognition	Esther Gladson
PNGA Rep	Lynne Crandall
TWGA Rep	Tina Villines
Webmaster	Elana Bryan
Social/Historian	Open

Please note, the position of Social/Historian is still open. The person in this position is primarily responsible for arranging our May Social event and for arranging food for the Club Championship in August. Additionally, this position is responsible for taking photographs at RLGA events and maintaining the RLGA scrapbook.

If you are interested in doing this job this season, please contact Elana Bryan.

A Force on the Course



Don't forget to complete your 2003 membership form and drop it in the RLGA box at the Pro Shop or drop it in the US mail.

If possible, please request to receive your copy of the FORE via the internet.

WWW.RLGA.ORG

Help keep our membership dues down.



RIVERBEND LADIES' GOLF ASSOCIATION

PO Box 1091

Kent WA 98035

Inside this issue:

- February Tournament Entry Form
- 2003 Tournament Schedule
- New Player Recognition Corner

February Calendar

Sunday	Monday	Tuesday	Wednesday	Thursday	Friday	Saturday
						1 9:30 Tee Times (2)
2 9:30 Tee Times (2)	3	4	5 9:30 Tee Times (2) RLGA Board Meeting 6:30	6	7	8 9:30 Tee Times (2)
9 9:30 Tee Times (2)	10	11	12 9:30 Tee Times (2)	13	14	15 No Tee Times Available
16 9:30 Tee Times (2)	17	18	19 9:30 Tee Times (2)	20	21	22 No Tee Times Available
23 9:30 Tournament—Tee Times (6)	24	25	26 9:30 Tee Times (2)	27	28	